

# The Stables



The Stables is a self-contained, two-storey accommodation block ideally suited for 36 guest, with a maximum of 41.

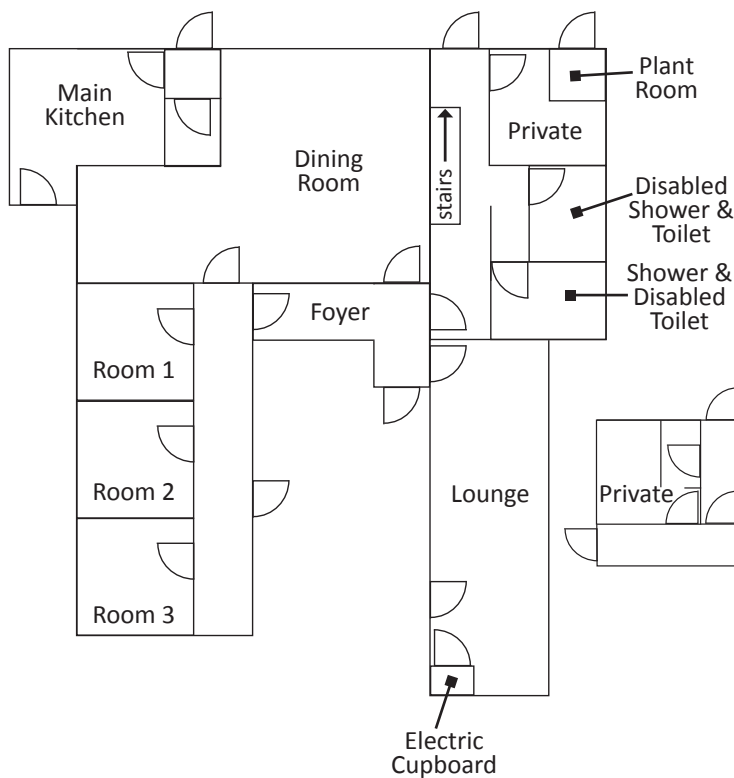
Ground floor accommodation includes a large lounge and separate dining room, as well as an accessible shower, toilets and sleeping accommodation. The three downstairs bedrooms include sinks and a dedicated emergency exit.

The first floor features further bedrooms and male / female toilet and shower facilities.

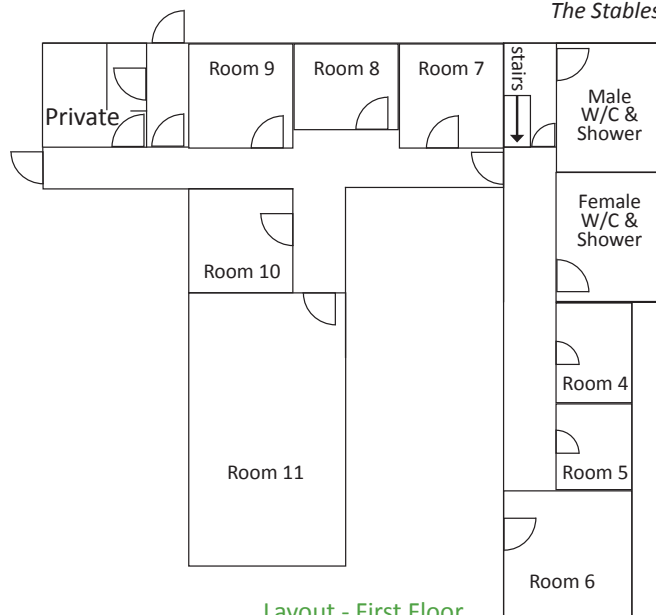
This building also has a stair lift for access to the first floor.

Room:	Capacity / Format
1	2 (2 x singles)
2	2 (2 x singles)
3	2 (2 x singles)
4	4 (2 x bunks)
5	2 (2 x singles)
6	6 (3 x bunk)
7	5 (1 x single, 2 x bunks)
8	2 (2 x singles)
9	6 (3 x bunks)
10	2 (1 x bunk)
11	8 (4 x bunks)
TOTAL	41 max, ideally 36

## Layout - Ground Floor



The Stables



Layout - First Floor

Classroom space on site and presentation / teaching materials can be booked in addition to this accommodation, please contact our Bookings Team to discuss your needs.